

PACKING EQUIPMENT – ELEVATORS – ICE MAKERS – PRODUCE CRATES

(2) Ice slingers w/ Baldor 3 ph motors, 15 HP, SS blower housing, 1 with chute – (2) 12 ft. & (1) 24 ft. section trough augers, galvanized, 12 in diameter auger – 15 in X 12 ft SS auger, SS housing with 3 phase elec motor – (3) Al flake ice machines, models DER26F-5T and DER26F-6T, galv. and SS, each with a 3 ph. compressor, 4-5 ton capacity per 24 hours – Larkin Humi-temp condenser/room cooler with compressor – pallet bin dumper and sorting belt, SS and poly, 20 bushel bin, 30 in. X 12 ft. bed, 5 HP motor, hydraulic dumper - 16 ft SS elevator with poly web, 12 in wide, SS hopper – 20+ ft. SS trash elevator with poly web, 6 in wide – packing table, SS with poly web, 12 in wide, elec, 1/2 HP, 3 ph motor – 15 ft. SS conveyor with poly web, 11 in wide, 1/2 HP, 3 ph motor – Sandiacre bagger model TG250LD, S#MCHSP2854U, date 2020, 3 ph. – SS dual bagging chute, elec. – Uline poly strapping machine, model H-959, semi auto, machine No.B31795, date Mar 2021 – 18 ft. ((2) 9 ft. sections) SS conveyor, 12 in wide, poly web – SS and poly hopper box with SS dirt eliminator with SS flight conveyor, 11 ft long X 12 in, 40-bushel hopper – SS barrel washer, 10 ft, on stand, elec 3 ph – SS sizer and trash eliminator, elec. 3 ph – SS & poly flight elevator with SS oversizer, elec 3 ph, 9 ft X 12 in – galv. flood washer 12 ft L X 30 in W, elec 3 ph with pump – 17 ft. SS conveyor, 15 in wide poly web – 21 ft. SS flight elevator, 12 in W – 17 ft. steel flight elevator, 17 in W, 1 HP motor – 4X4 plastic produce bins, 50+ – plastic field boxes/crates, 700+

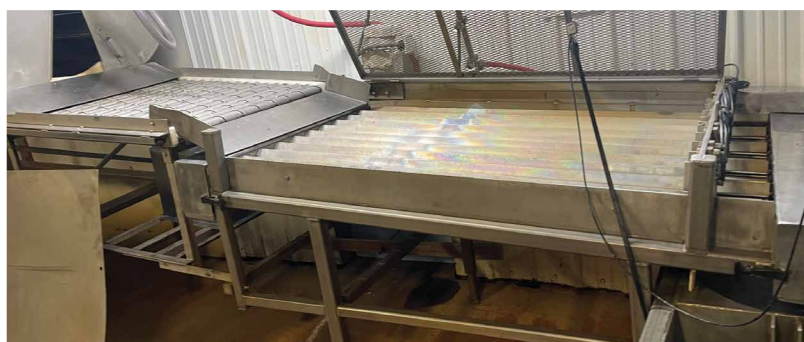
PLANTERS – SPRAYERS – SEMI TRACTORS – REEFER TRAILERS  
Stanhay 3 pt. belt planter, 5 row with hoppers, SS packing wheels – misc. cultivator attachments – 5 row planter junior belly mount SS packing wheels – belly mount basket mulchers off Farmall C or Cub – belly mount attachments – 3 topper heads (radish/beets) – (2) homemade pull-type sprayers, 175 gal. SS tank, 18 ft booms, Honda gas motor, elec boom controls, Hypro. 9203C, PTO pump, 6 ft wheelbase – pull-type sprayer, 225-gal poly tank, high wheel, 23 ft boom, Honda 13 HP motor, elec boom controls, Hypro. pump, 6 ft wheelbase – Stanhay S870 6 row air planter, 3 pt, SS press wheels, hydraulic – Agricola SN1130 4 row air planter, 3 pt, S#060972 – MC flail mower 8 ft, transport - Utility 44 ft. semi-trailer, for storage – (2) 1994 & 1996 Utility 48' by 102" Smart Reefer semi-trailers, Reefers work – 2004 Freightliner Columbia semi-tractor, day cab, Cat C13 430 HP, 10 sp trans, dual tandem, 507,773 miles – 1994 Int. model 8100 semi-tractor 9 sp Eaton Fuller, Cummins L10 315 horse, has electrical issues – 3 pt 5 bottom poly moldboard plow – Int. grain drill, grass seeder box, 16-hole, double disc – Pul-Flail mower, 8 ft, needs work – 20+ Porta-Jon trailers, 4X6 decks, single axle – Woods 3 pt ditch bank mower, needs work – 5 X 16 Kneverland plow 3 pt – 12 ft 3 pt Kuhn power harrow, PTO drive - 12.5 ft. roller with hydraulic lift  
MISC.

Hercules Ajax Mazak 18 horizontal lathe 8.5 ft bed, works – Bridgeport vertical mill J-209874 – (2) condensers with Copeland 5 HP compressors – 4 Bonn condensers with McCoy 3 HP compressors  
ONSITE TERMS

Driver's license or State ID required to register for bidder number.  
Cash, Check, Debit Card, Visa, or Master Card accepted. 4% buyer's premium on all sales; 4% waived for cash or check when paid sale day.  
Information is believed to be accurate but not guaranteed. Multi Par auction process may be used.

ONLINE TERMS  
Wire Transfer only accepted. 10% buyer's premium on all sales.  
Information is believed to be accurate but not guaranteed. Multi par auction process may be used.

Auction By Order Of  
Jeffrey W. Zellers, President, 330-877-9371



# ABSOLUTE AUCTION

THURSDAY – MARCH 21, 2024 – 10:00 AM



FARM EQUIPMENT



RUDY W. KIKO  
AUCTIONEER/REALTOR  
330-540-2416  
rudykiko@kikocompany.com

## KW ZELLERS AND SON INC. EQUIPMENT DISPERSAL

13494 DUQUETTE AVE.,  
HARTVILLE, OH 44632

### LIVE AUCTION WITH ONLINE BIDDING

#### AUCTION HIGHLIGHTS

- Tractors
- Planters
- Row Crop Sprayers
- Cultivators
- Irrigation Hard Hose Reel Traveler/Equipment & Pipe
- Trucks
- Semis
- Reefer Trailers
- Packing & Shipping Equipment
- Ice Makers
- Specialty Crop Equipment
- Produce Bins



Information is believed to be accurate but not guaranteed.  
KIKO Auctioneers



www.kikoauctions.com | 800.533.5456



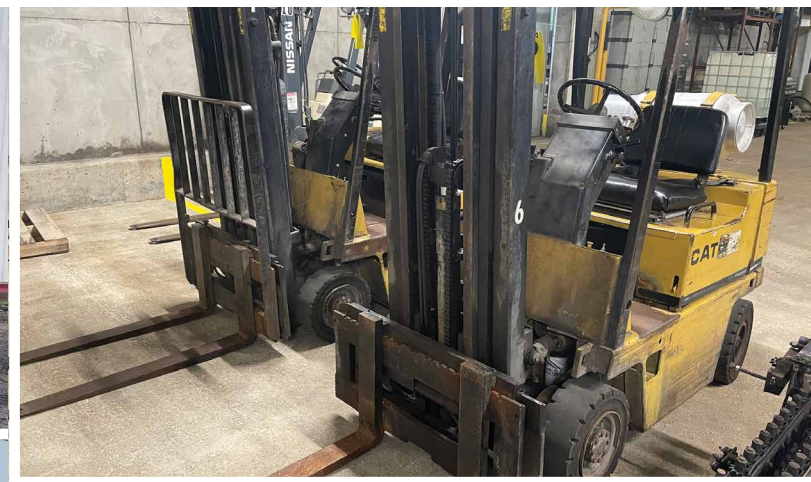
Scan for auction details, including directions.

Absolute Auction. All sells to the highest bidders on location.



**TRACTORS – ROW CROP TRACTORS – FORKLIFTS – DOZER – SPECIALITY TRACTORS**

Cat V300 forklift, propane, S#5HB3280, 3,000 lb - Cat V30D forklift, propane, S#5HB3369 3,000 lb. - Cat V35D forklift, propane, S#5HB04123 3,500 lb. - Farmall C row crop with belly mount shield sprayer, 150 gal. poly tank, Hypro. PTO pump, 6 ft wheelbase - Ford 4630 diesel 4WD 6 ft. wheelbase 230-95R rear rubber, 3640 hrs, 4 sp high/low, shuttle dual SS (65 gal. each) pest/fert. tanks with Hypro PTO pump, table mounted on front for seed baskets - Ford 4610 diesel 6 ft. wheelbase 230-95R 48 rears, 5900 hrs, gear drive, dual SS 60 gal. tanks with Hypro PTO pump, table mounted on front - NH TD80D 4WD, 6 ft wheelbase, set-up for harvesting, 3510 hrs, gear drive, shuttle, creeper, SS conveyors, spray tank, rear platform elec. pump - Farmall C, wide seat, canopy, 6 ft wheel base, PTO - Int. 2444, gas, 6 ft wheel base, 9.5-36 rubber, 3 pt - Ford 4610 diesel, 4WD, 6 ft wheel base, 9.5R-48 rubber, 3 pt, PTO, dual remotes, gear drive, 3942 hrs - Int. 574 diesel with cab, front weights, 3 pt, PTO, 1 remote, 4 sp H/L, 9000 hrs - Case 850C dozer, 6-way blade, rops, 6056 hrs - Int. 140 gas with belly mount hydraulic power mulcher, 6 ft wheel base - Case IH 3230 diesel - Farmall 1206 WF duals - Ford 8630 power shift 4WD, 20.8-38 axle mt. duals, front wts, full cab, AC, 540/1000 PTO, 2 remotes - Int. 504 gas, narrow front, Ford straight 6 engine, mounted radish topper, 3 row, hydr. reservoir, rear bin/unloading hopper - Massey Ferguson 180, diesel, 6626 hrs, 2 remotes - Farmall 504 diesel, narrow front, duals - NH 5610 custom narrow front, diesel, 1823 hrs, duals, 3 pt, remotes, 540 PTO, canopy, gear drive - Ford 7740 diesel, 4WD, full cab, 320/90R-46 rubber, remotes, 3 pt, 14000 hrs, gear drive, forward reverser shuttle - Ford 3000 gas, gear drive, 4353 hrs, 3 pt, remote, engine rebuilt last 2 years - NH T4.85 diesel, 4WD, 1579 hrs, rops, canopy, 18.4-30 rubber, 12 sp shuttle, 540/1000 dual remote - Farmall Cub rear cultivator, 6 ft wheel base, S#155363 - Farmall Cub, belly mount BM and rear cult., Gandy applicator box, S#160770 - Farmall Cub, BM cult., 2 Gandy applicator boxes, S#153220 - Farmall Cub BM 2 row cult., setup to drop fert., Gandy box, rear cult, S#213501 - Farmall Cub, BM 60 in. mower, standard width, S#153224 - Farmall C, BM cultivator - Farmall C, BM cultivator - Int. 2444 gas, 3 pt., PTO, remote 4 spd HL gear drive - Int. 140 gas - Farmall Cub BM and rear cultivator, Gandy applicator box, S#75170



**TRUCKS – VEHICLES**

1974 Chevy Custom 30 4WD, 4 sp manual, dual rear wheel, 10X8 steel flatbed, 350 V8 - 1979 Int. 1700 dump 4WD, 4 sp manual, late model Galion Goodwin 10 ft steel dump, mod. 400V-10, 345 gas, 606,844 miles - 1993 F-250 XL 4WD, auto, 300, 6 cyl, 10X8 steel flatbed - 1998 F-350 4WD 6 cyl auto, 8X10 steel flatbed - 2005 GMC box truck, auto, 6.0L, AC, dual rear wheel, 16 ft. box X 8 ft wide rollup door, 122,877 miles - 1985 F-250 351 V8, auto, 4WD, 8X10 steel bed, 155,971 miles, duals - 2010 F-150 XL, 4WD, crew cab, 5.4 Triton, 183,624 miles - 1991 F-250 6 cyl., auto, 4WD, 8X10 steel bed, duals, 194,900 miles - 1988 F Super Duty Custom, 4WD, duals, 9 ft steel dump, elec. over hydraulic, 4 sp, 460 engine, 127,412 miles - 1987 Ford E-350 van, 4WD, passenger/shuttle van, 143,450 miles, auto, 6 bench seats - 1985 Ford Crown Victoria 4 door, auto, 166,778 miles, power locks/windows, V8 - 2003 Ford Explorer Eddie Bauer, 4L V6, 175,593 miles - 1999 Ford F-250 Super Duty 5.4 Triton V8, 4WD, 8 ft. service bed, steel with toolboxes, ladder rack, 239,999 miles - 1990 F-150 XL, 4WD, 351 eng, auto, 213,187 miles, 8 ft regular bed with benches and canopy - 1985 Ford E-350 van, 4WD, passenger van, auto, 351 engine, 155,317 miles - 1983 F-250 XL 4WD, 351 engine, auto, 9.5X8 steel bed, 212,425 miles - 1980 F-250 4WD, 351 engine, auto, 9.5X8 steel bed, 166,746 miles (F-350 XLT front end) - 1982 Ford E-150 van, 4WD, straight 6 auto, 130,379 miles passenger van - 1976 F-350 custom 4WD, 351 engine, auto, drw, 8X10 steel bed, one owner, 127,545 miles - (6) early 1950s Dodge M37 military trucks, 4WD, 4 sp, flathead 6 cyl, dual rears, 8X11 steel flatbeds - '50s Dodge M37 with regular bed, benches/canopy  
**IRRIGATION EQUIPMENT – IRRIGATION HARD HOSE REEL TRAVELER**  
 2015 ABI 90 irrigation hard hose reel traveler, 3 in X 750 ft hose - 2012 Bauer Rainstar E11 irrigation hard hose reel traveler, pull type, 110 MM diameter hose, 350 M long, with nozzle, elec controls - 2015 Bauer Rainstar E31 irrigation hard hose reel traveler, 150 ft boom, dual tandem axle, gently used, 125MM X 350M hose - 2007 Bauer Rainstar T61 irrigation hard hose reel traveler 100MM X 300M hose, elec. controls, nozzle - 1998 Bauer Rainstar 110, 110MM X 300M hose, nozzle - Bauer irrigation hard hose reel traveler, piston driven, 75MM hose, nozzle - 2002 Bauer Rainstar E2 plus, 110MM X 350M hose, nozzle - 3 in. alum irrigation pipe, mostly 30 ft sections on transport trailer, Rainfort nozzles, 75 dead pipe and 75+ risers, elbows and valves - 3 in. X 30 ft. alum. irrigation pipe, 150+ pcs with nozzles/sprinklers - transport trailer - bunks of 4 in. & 3 in. irrigation pipe: 3 in X 20 ft steel, 3 in. X 30 alum. 150 pc with sprayers, 3 in. X 30 alum 150 pc with sprayers - 4 in alum irrigation pipe on transport trailer, 20 ft and 30 ft. sections, 60+ pcs - 4 in. X 20 ft alum. irrigation pipe on wagon, 75 pc. - 4 in. alum irrigation pump on transport trailer - 2 PTO irrigation pumps, 1 Bauer, 1 Berkley

